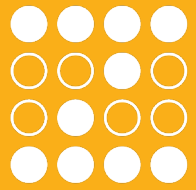


# Installation Instructions

## Extension Ring



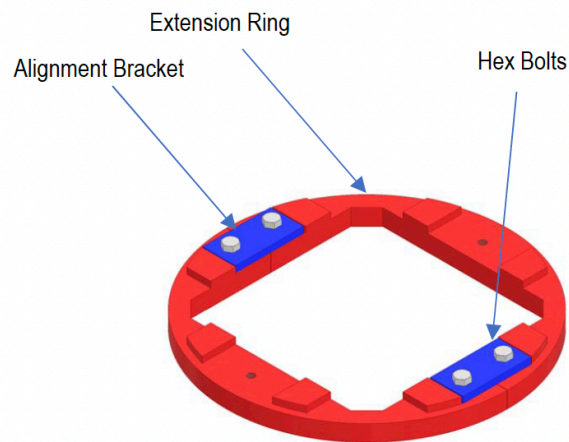
**IMPORTANT** - For your safety, read and understand instructions completely before installation. Luminaires must be installed by a qualified electrician (check with local and national codes for proper installation). Save these instructions for future reference.



**WARNING** - Risk of shock or fire. Disconnect power before installing or servicing.

**WARNING** - Risk of shock or fire. LED installation requires knowledge of luminaires electrical systems. If not qualified, do not attempt installation. Contact a qualified electrician.

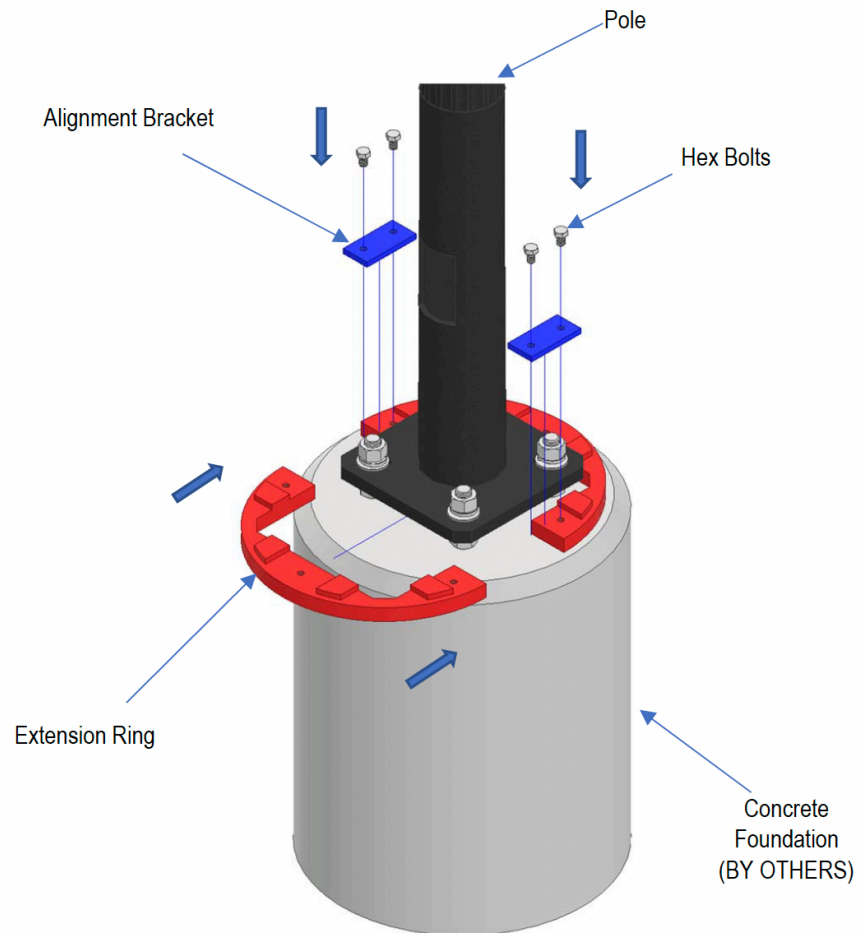
**WARNING** - To prevent wiring damage or abrasion, do not expose wiring to edges of sheet metal or other sharp objects.



**NOTE** - Verify that all accessories are included in packaging. Components vary by model.

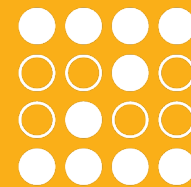
### Installation Instructions:

1. Install the Extension Ring to the Concrete Foundation and secure with the hardware (see illustration below) Concrete Foundation (BY OTHERS)



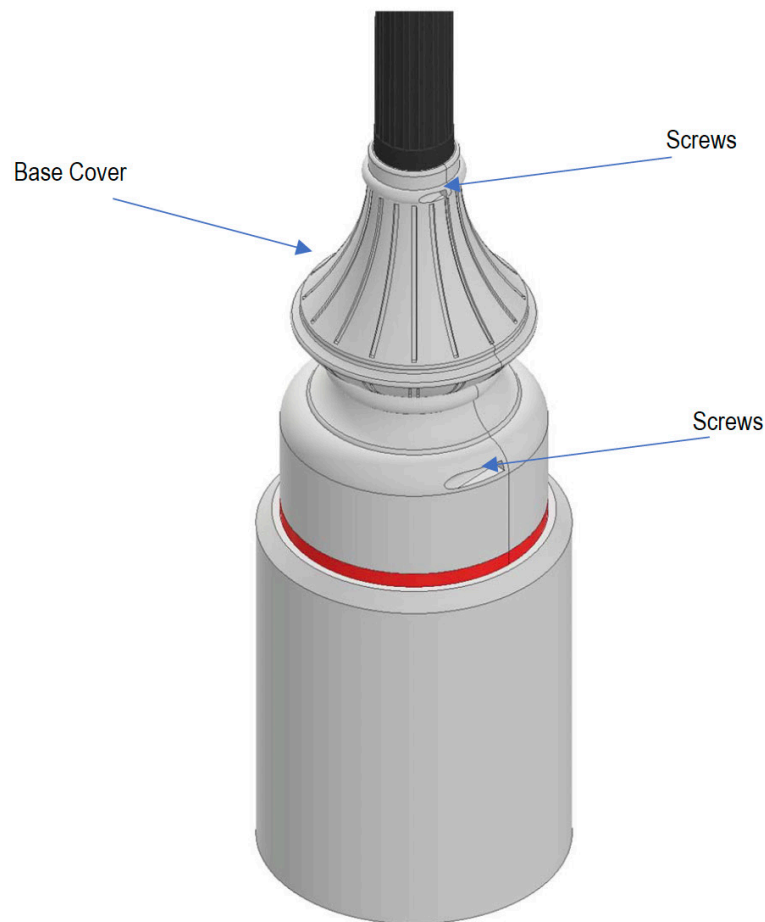
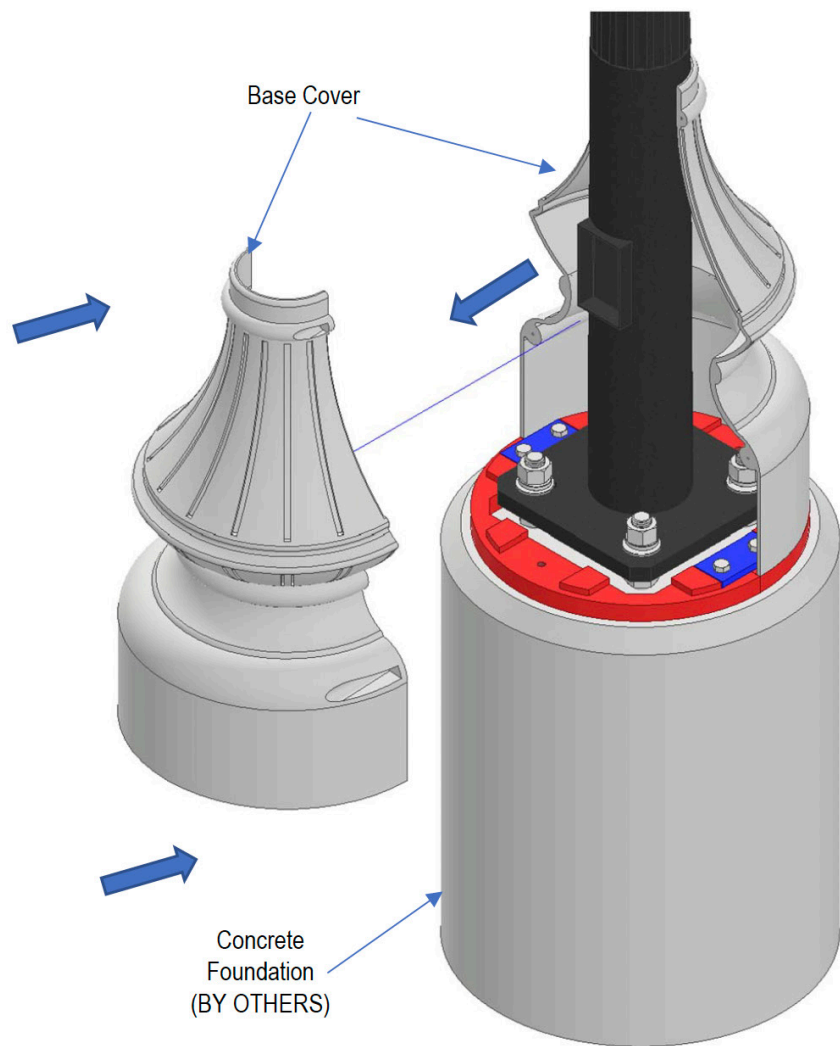
# Installation Instructions

## Extension Ring



2. Once the Extension Ring is assembled and secure, Install the two pieces Base cover on top of the Extension Ring (see below Image).

3. Once the Base Cover is installed, Secure by tightening the (4) screws as shown below.



**2 of 2**